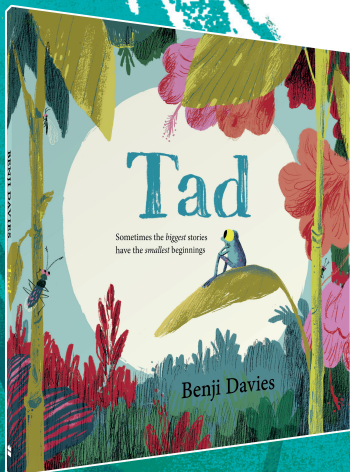
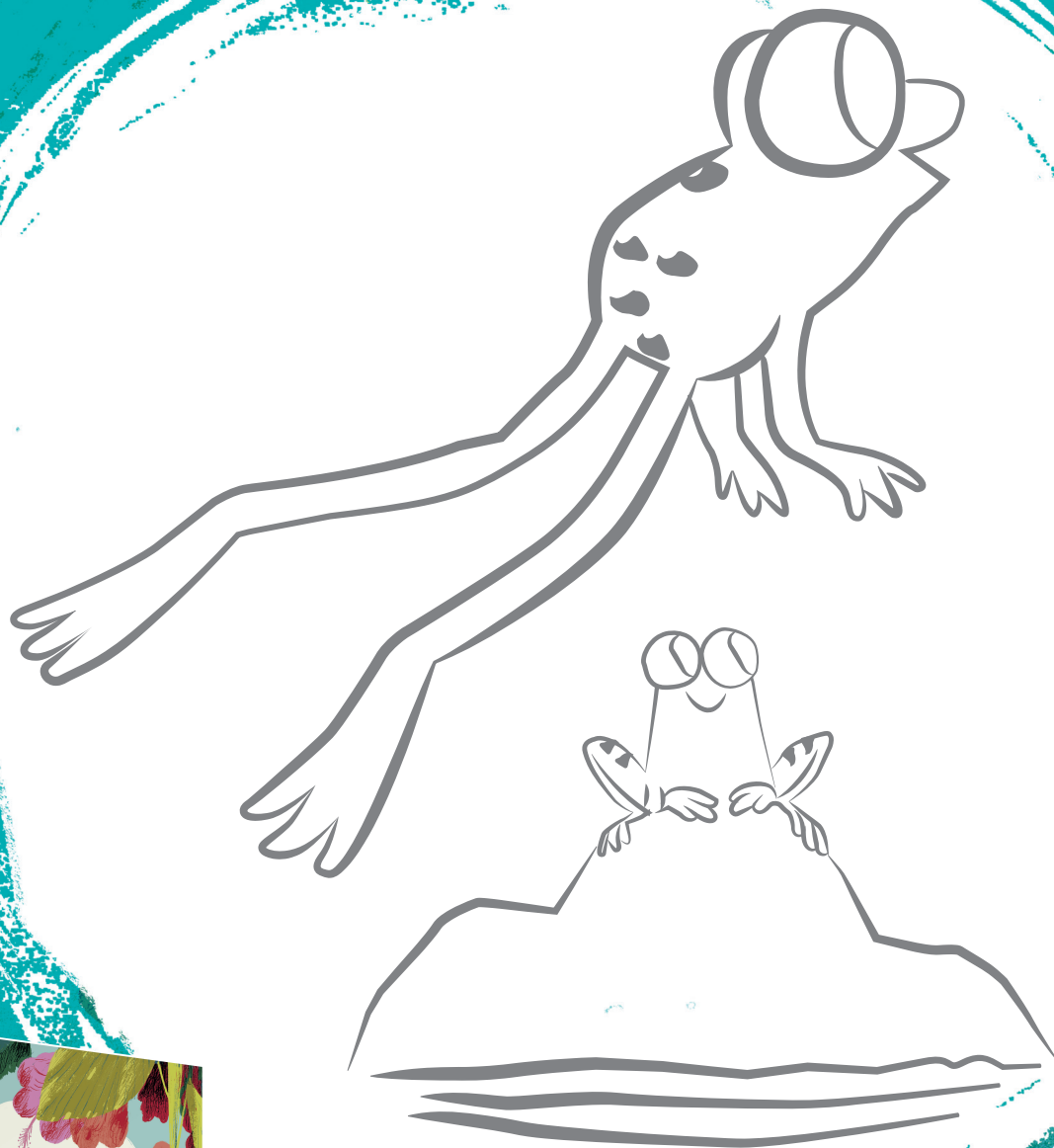


HarperCollinsChildren'sBooks
presents

Tad

Colouring-in Activity



HarperCollinsChildren'sBooks
presents

Tad

Spot the difference

Can you
spot the
5 differences
between these
two pictures?



ANSWERS: 1) Tad has lost her tail • 2) The green frog has red spots • 3) The blue frog has lost its stripes
4) Tad has white eyes • 5) There's a new tadpole in the scene

Tad

Learn about
the life cycle of a frog

1
Frogs lay their eggs in water.
They look like little black dots
surrounded by jelly. The tadpoles
grow bigger inside the eggs until
they are ready to hatch.

2
When the tadpoles hatch
they have a big head and a long tail.
They eat plants in the pond
and grow bigger.

3
Tadpoles start to grow
little legs, first the back legs
and then the front legs.

4
The tadpole is now a froglet
and its legs grow longer and
stronger while its tail
gets shorter and shorter.

5
Finally the froglet loses its tail
completely and jumps out of the
pond as a frog.



Tad

Pond dipping guide

Pond-dipping is a great way to discover the creatures living in even the smallest of ponds.

You will need:

- A net to catch pond life
- A container to hold your finds
- A magnifying glass or plastic spoon to view them more closely
- Pencil and paper to record what you find

How to go pond-dipping:

- 1 Gather your things and find a pond to dip in. First look carefully to see what creatures you can spot around the water e.g. birds and insects.
- 2 Ask an adult to fill your container with pond water for the creatures you find.
- 3 Find a good spot where you can stand or kneel by the edge of the water. Watch out for slippery ground and don't lean too far out!
- 4 Slowly dip your net into the water and move it around in a figure of eight.
- 5 Carefully lift your net out and tip it inside out into your container.
- 6 Inspect your catch! Some creatures may be very small so use a magnifying glass or plastic spoon to see them better.
- 7 What did you find? Write it down, draw a picture or take a photo!
- 8 Try dipping in other parts of the pond where you might find different creatures: on the surface, in the weeds, in the muddy bits.
- 9 When you've finished looking gently tip the contents of the container back into the pond so the creatures can go back to their homes.

Don't forget to wash your hands when you get home!

