



# Clarice Bean

## Think Like An Elf

by Lauren Child

### CREATE YOUR OWN CHRISTMAS TREE DECORATIONS

- Colour the decorations and ask an adult to help you cut them out.
- Make a hole at the black circle and string a ribbon through to make your decoration.
- Now you can hang it on the tree!



Join the one-and-only Clarice Bean in this sparkling Christmas story!

HarperCollinsChildren'sBooks  
presents



# Clarice Bean

Think Like An Elf by Lauren Child



Join the one-and-only Clarice Bean in this sparkling Christmas story!

HarperCollinsChildren'sBooks  
presents

# Clarice Bean



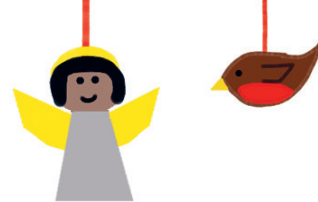
COLOUR  
THE  
CHRISTMAS  
SCENE!

Think  
Like An  
Elf

by  
Lauren  
Child



Join the one-and-only Clarice Bean in this sparkling Christmas story!



# Clarice Bean

Think Like An Elf by Lauren Child

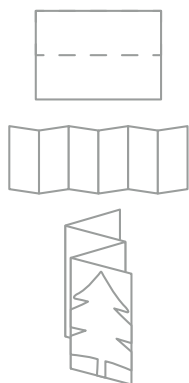
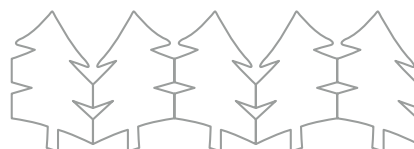
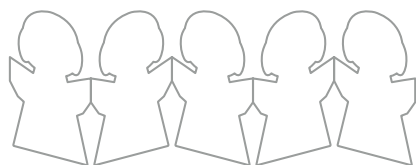
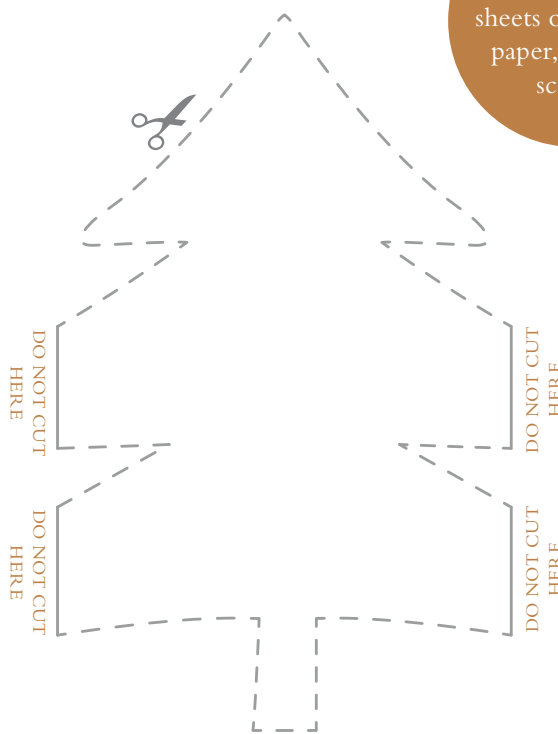
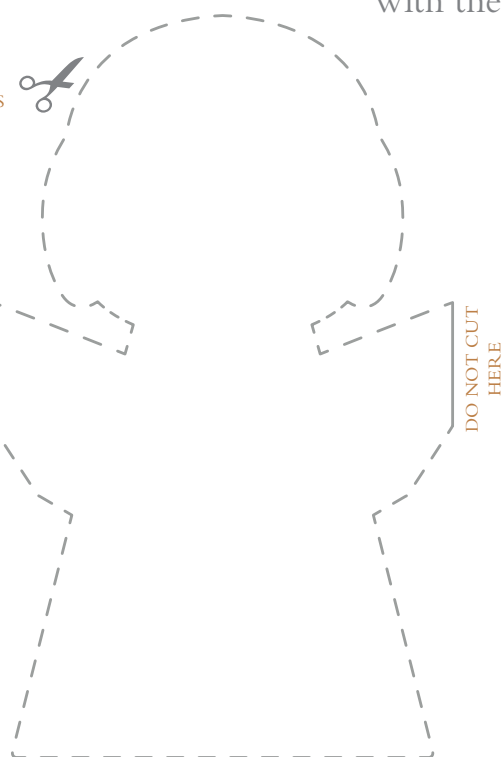
## MAKE FESTIVE PAPER CHAINS

Create paper chains to decorate your windows like Clarice Bean.

Follow the instructions below and ask an adult to help with the cutting out.

**YOU WILL NEED:**  
sheets of coloured paper, a pencil, scissors

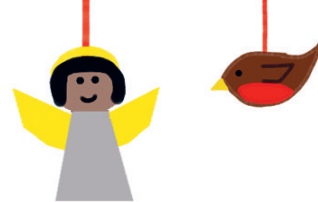
CUT ALONG THE DASHED LINES



### INSTRUCTIONS:

1. Cut your paper into long strips around 10cm high. If you are using A4 paper just cut it in half lengthways.
2. Fold each strip back and forth like an accordion to make several small rectangles, about 6cm wide.
3. Carefully cut out the angel or tree template shown here and draw around it on one end of your folded strip to create a cutting guide
4. Use your guide to cut out your shape making sure that you don't completely cut the edges on the folds
5. Open out your paper chain and colour and decorate however you like!





# Clarice Bean

Think Like An Elf by Lauren Child

## QUICK AND EASY FUDGE RECIPE

Clarice Bean says making fudge is easy and also hard, but this recipe is very simple and makes delicious chocolatey fudge every time!



### YOU WILL NEED:

- 397g tin condensed milk
- 400g chocolate, broken into small pieces
- vanilla extract (optional)
- a large bowl
- a baking tray lined with baking paper

### INSTRUCTIONS:

1. Put the condensed milk and chocolate into the bowl and microwave for 30 seconds
2. Remove the bowl and beat the mixture well, then return to the microwave and repeat once or twice until the mixture is thick and smooth.
3. Pour the fudge into the baking tray, smooth it out and put it in the fridge overnight to cool.
4. Cut your fudge into small cubes and store in the fridge until needed.

Join the one-and-only Clarice Bean in this sparkling Christmas story!

