

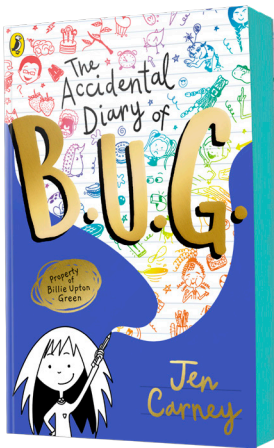
# The Accidental Diary of B.U.G.

Jen Carney

## Learning Activities for KS2/3

These fun activities have been designed for children aged 8+ to complete in the classroom or at home.

## ABOUT THE BOOK



Enter the hilarious world of Billie Upton Green . . . A masterpiece of funny fiction, and the start of an exciting new series full of Billie's laugh-out-loud observations and doodles!

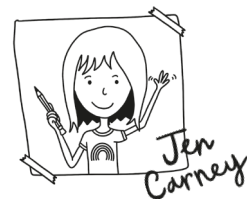
There is a new girl at Billie's school, and Billie takes it upon herself to show her around, teach her the Biscuit Laws, and remind her that yes, two women can get married (after all, Billie's mums' wedding is the event of the year).

But then suspicion sets in.

The new girl seems very close to Billie's best friend Layla. And doesn't she know a little too much about the latest big school heist – the theft of Mrs Robinson's purse...?

## ABOUT THE AUTHOR

Jen Carney is an author-illustrator living in Lancashire with her wife, three children and an array of animals. She wrote her debut novel to celebrate diverse, contemporary and slightly bonkers families.







# ACTIVITY ONE BISCUITS!

C. Can you design a poster advertising your new biscuit? Think about tempting adjectives such as delicious and mouth-watering.

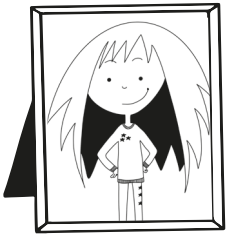




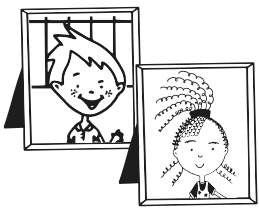
## ACTIVITY TWO

### DIARY WRITING

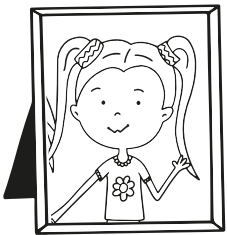
Read the chapter entitled *New Girl*, pages 20–24. On a separate sheet of paper re-write this chapter in one of the following ways:



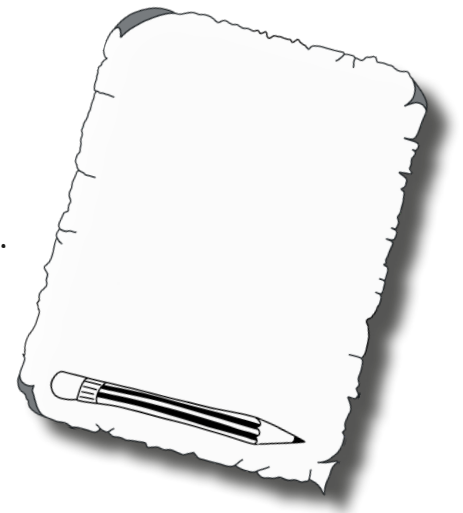
- A. As though you are Billie but change her perspective. Make it really positive. Change her comments about Janey to make the reader think Billie absolutely loves Janey and believes she's going to be an amazing friend.



- B. As another member of Class 5 e.g Dale or Layla.



- C. As Janey – it's her first day at a new school. How might she be feeling?




## ACTIVITY THREE

### DECISION CHARTS

Billie loves making decision charts. Some examples can be found on pages 4, 5, 6, 19 and 157. Can you design one of your own?

HOW?

- A. Think of any question. E.g. What's your ideal pet?
- B. Make up some silly questions to help people discover theirs. E.g. Do you like going on long walks – yes/no.
- C. YES could lead to DOG! NO would lead to another question e.g. Would you like a pet that talks to you?
- D. Yes – PARROT, NO would lead to something like  Do you like cleaning poo out of cages? YES leads to hamster etc etc . . .

BE SILLY AND IMAGINATIVE.

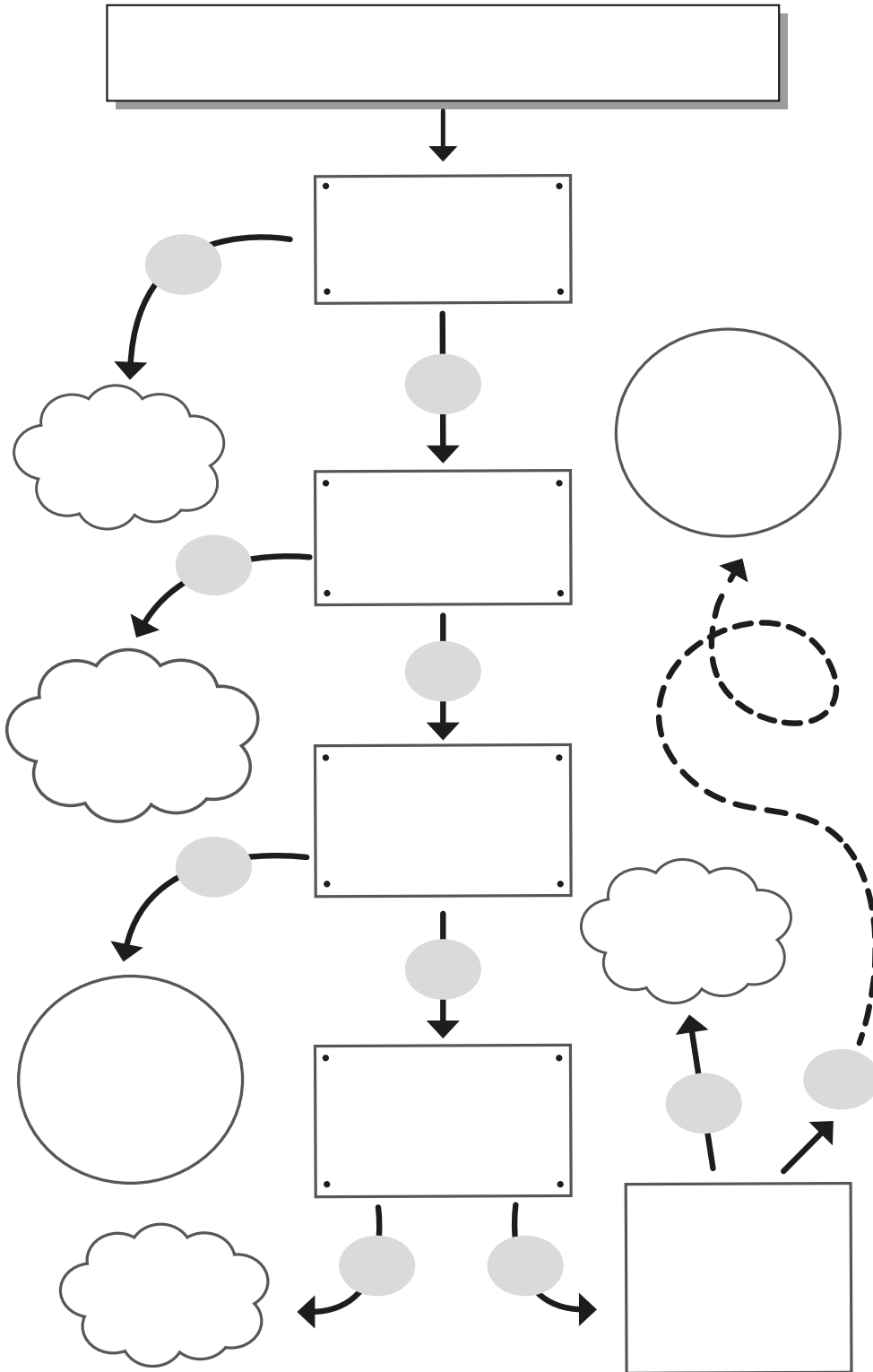
- E. Illustrate your decision chart with appropriate doodles.
- F. Ask your friend to test it for you.



# ACTIVITY THREE

## DECISION CHARTS

DRAW YOUR DECISION CHART HERE

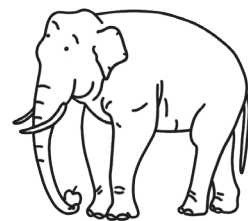




# ACTIVITY THREE

## SPELLINGS

Billie doesn't like spelling. Mostly because she doesn't believe she's very good at it. On page 37, her mum gives her a top tip to help her to spell NECESSARY. On page 156, Mrs Patterson provides a tip about the word BECAUSE.



**A.** Think of three or more words you often forget how to spell.

Can you make up a top tip to help other people remember how to spell them?

WORD 1

TOP TIP

WORD 2

TOP TIP

WORD 3

TOP TIP



On pages 32 and 33, Billie talks about very long words.

**B.** Can you find out what FLOCCINAUCINIHIPIILIFICATION means?





# ACTIVITY THREE SPELLINGS

C. How many words can you make from the letters in

PNEUMONULTRAMICROSCOPICSILICOVOLCANIOSIS?!

.....

.....

.....

.....

.....

.....

.....

.....

.....

.....

.....

.....

.....

.....

.....

.....

.....

.....

.....

.....

.....

.....



D. Can you make up an extra-long word like Billie does on page 33 and write a definition of what it means or how it could be used in a sentence?

MY WORD IS .....

.....

.....

.....

.....

.....

.....

.....

.....

.....

.....

.....

.....

.....

.....

.....

.....

.....

.....

.....

.....

.....



# ACTIVITY FOUR

## FAMILIES

Read the chapter called Janey = Painy, pages 45-51

Families can be made in lots of different ways. Draw a picture of your family. Draw five other types of families around it. Then discuss with a classmate 'What makes a family?'

