

Sidney Sydney



Here's a picture of Sidney exploring Sydney harbour!
Please colour it in. Maybe add some more bubbles...
Sidney is a 'little penguin' (*Eudyptula minor*),
so those feathers are blue.



WALKER BOOKS

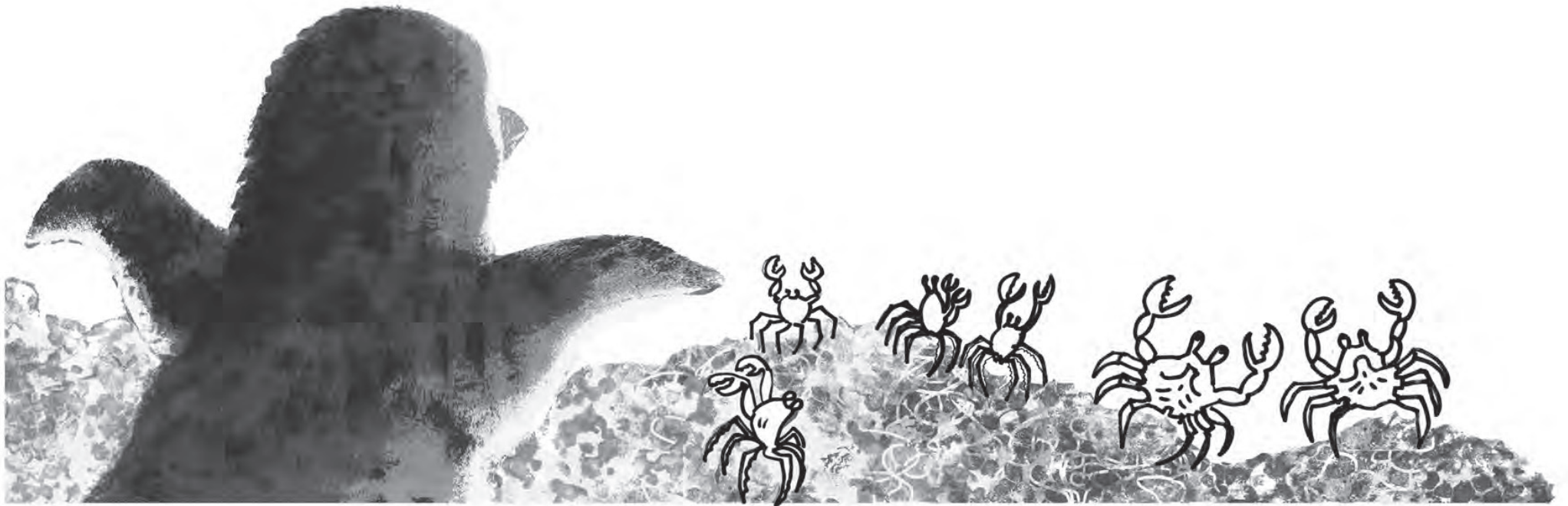
Sidney of Sydney © 2025 Sue Whiting and Liz Anelli. Illustrations © Liz Anelli 2025. All rights reserved.

Sidney of Sydney

COLOUR IN SHEET



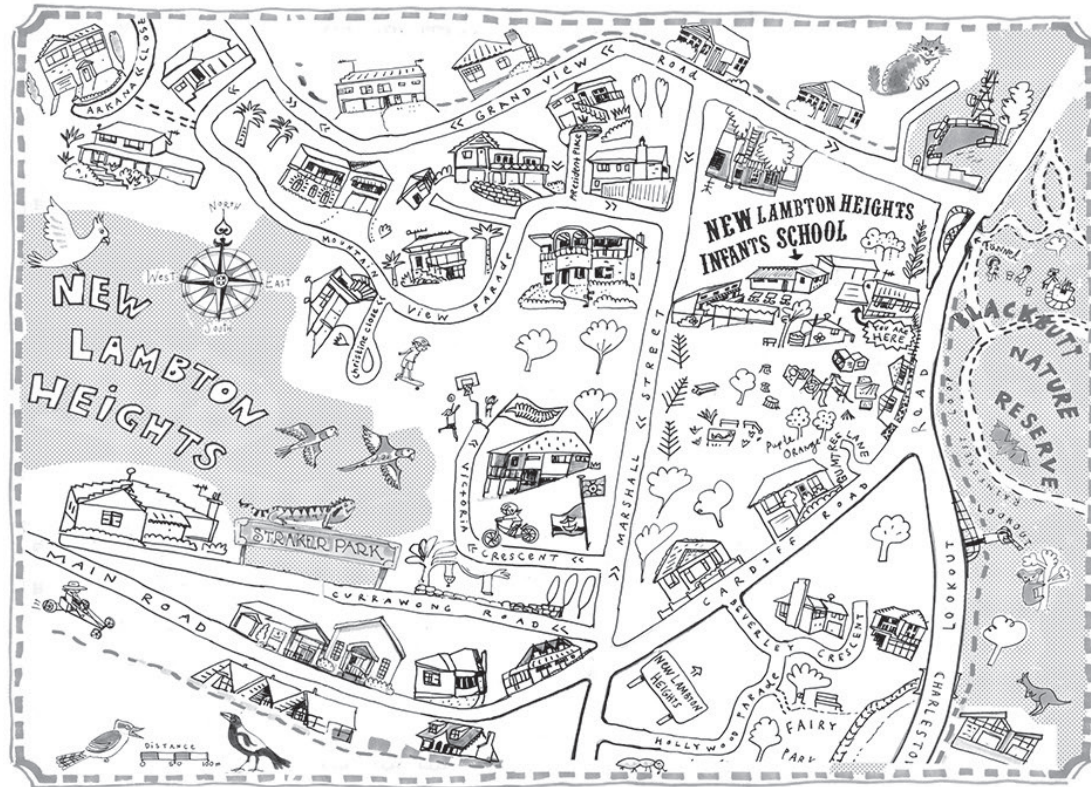
“Sidney gazes out at the big wide world in front of him.”
What does he see? What does he say? Draw it all in!



WALKER  BOOKS

Sidney of Sydney © 2025 Sue Whiting and Liz Anelli. Illustrations © Liz Anelli 2025. All rights reserved.

Sidney of Sydney



2 <

Here's one Liz made for Lambton Heights School

MAKE A MAP

Liz loves making illustrated maps

Follow these easy tips to make your own map.

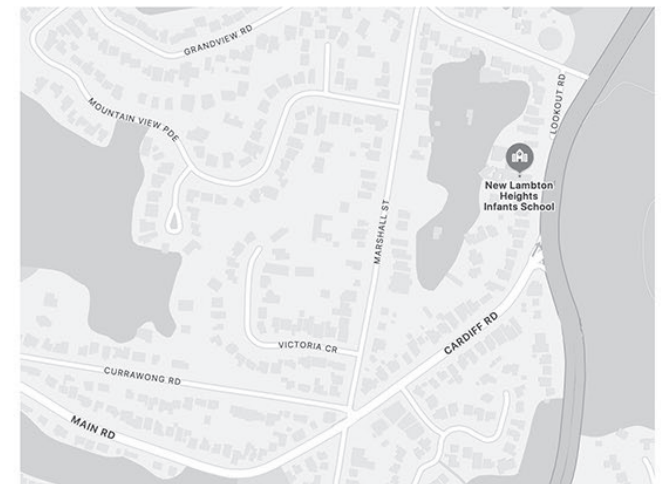
1 > Type the name of your suburb into Google Maps

- Zoom in so you can read all the street names
- Take a screen shot and print it out onto paper.
- Trace just the roads onto another sheet of paper. (You can use a window as a 'lightbox')

2 > Take your map for a walk and draw in things of interest in the correct places: parks, creeks, shops, your home, school, whatever you like. How about the best street to skate down, tree houses? Add wildlife you see or hear on your walk - birds, insects, plants...
> Maybe add symbols to help others read your map: like a compass, scale ruler, footpaths, colours.

Good luck!

1 >



WALKER BOOKS